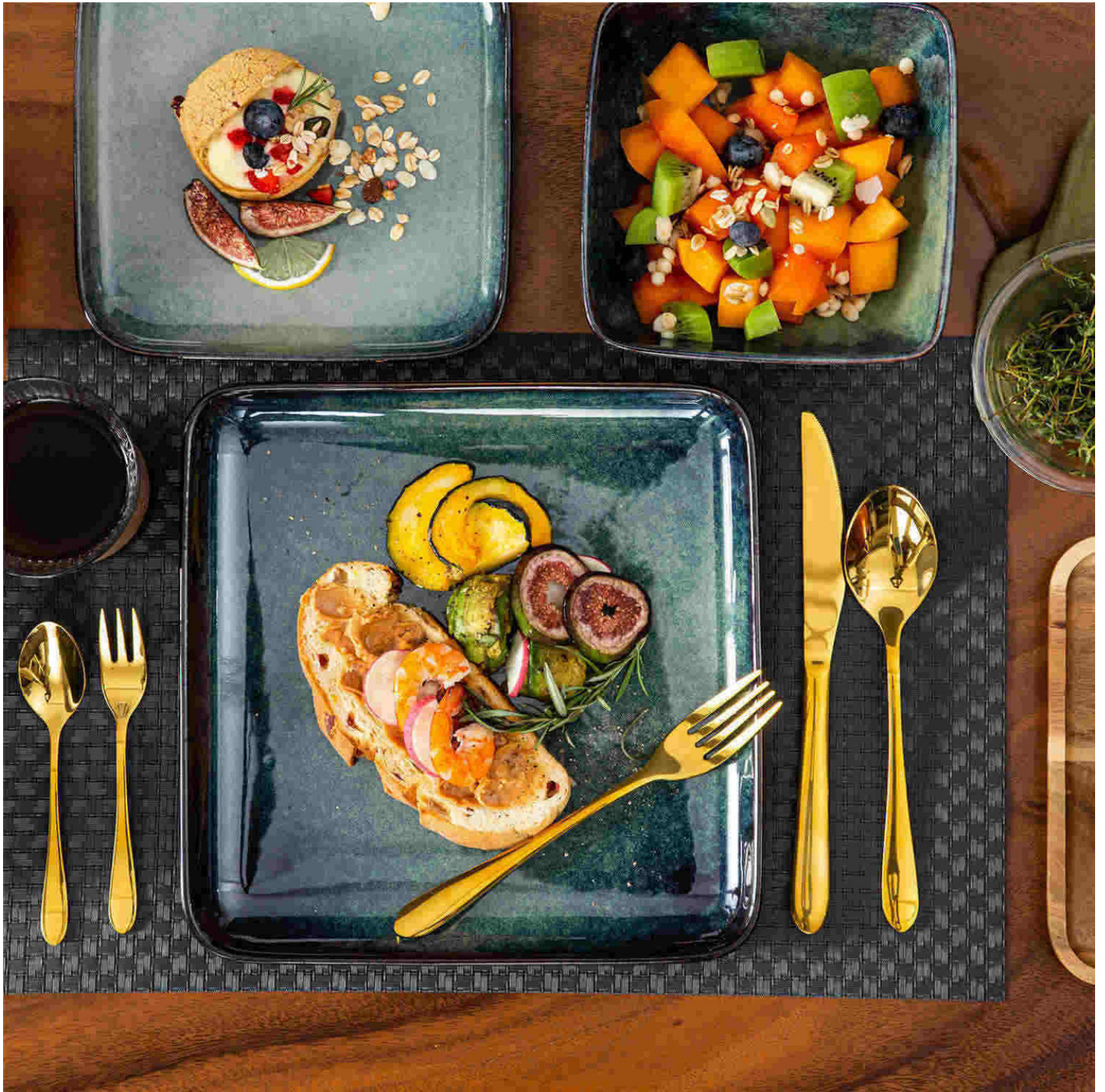


Embrace Rustic Charm with Farmhouse Dinnerware Sets

When it comes to creating a cozy and inviting atmosphere in your country kitchen, farmhouse dinnerware sets are a must-have. These sets exude rustic charm and bring a touch of nostalgia to your dining table. Whether you're hosting a family dinner or a casual gathering with friends, farmhouse dinnerware sets add a touch of warmth and character to your meals.



1. Classic White Stoneware Sets

One of the most popular choices for farmhouse dinnerware sets is classic white stoneware. These sets are versatile, timeless, and perfect for everyday use. The simple yet elegant design of white stoneware complements any kitchen decor and allows your culinary creations to take center stage. Whether you're serving a hearty stew or a fresh salad, white stoneware sets are a staple for any country kitchen.

2. Vintage Floral Patterns

For a touch of nostalgia and whimsy, consider farmhouse dinnerware sets with vintage floral patterns. These sets add a pop of color and personality to your table, making every meal feel like a special occasion. Whether you opt for delicate roses or vibrant sunflowers, vintage floral patterns bring a sense of joy and cheer to your dining experience.

3. Rustic Earthenware Sets

If you're looking to add a touch of rustic elegance to your country kitchen, consider farmhouse dinnerware sets made of earthenware. These sets have a natural, earthy appeal and a handmade quality that adds warmth to your table. Whether you choose a matte finish or a glossy glaze, earthenware sets bring a sense of authenticity and craftsmanship to your dining experience.

4. Farm Animal Motifs

For a whimsical and charming touch, farmhouse dinnerware sets featuring farm animal motifs are a delightful choice. Whether you're a fan of chickens, cows, or pigs, these sets add a playful element to your table setting. Farm animal motifs evoke a sense of rural life and add a touch of whimsy to your meals, making them perfect for casual gatherings and family dinners.

5. Blue and White Porcelain Sets

For a classic and timeless look, consider farmhouse dinnerware sets in blue and white porcelain. These sets have a traditional appeal and a crisp, clean aesthetic that never goes out of style. Whether you're serving a traditional Sunday roast or a summery pasta dish, blue and white porcelain sets add a touch of elegance and sophistication to your table.

6. Hand-Painted Ceramic Sets

Add a touch of artistry and craftsmanship to your country kitchen with hand-painted ceramic [farmhouse dinnerware sets](#). These sets are unique, one-of-a-kind pieces that showcase the skill and creativity of the artisan. Whether you choose a floral motif or a geometric pattern, hand-painted ceramic sets add a touch of personality and flair to your dining table.

7. Modern Farmhouse-Inspired Sets

For a contemporary twist on traditional farmhouse dinnerware, consider modern farmhouse-inspired sets. These sets combine the rustic charm of farmhouse style with sleek, minimalist design elements for a fresh and updated look. Whether you opt for matte black finishes or geometric patterns, modern farmhouse-inspired sets add a touch of sophistication and style to your country kitchen.

References

- [farmhouse dinnerware sets](#)